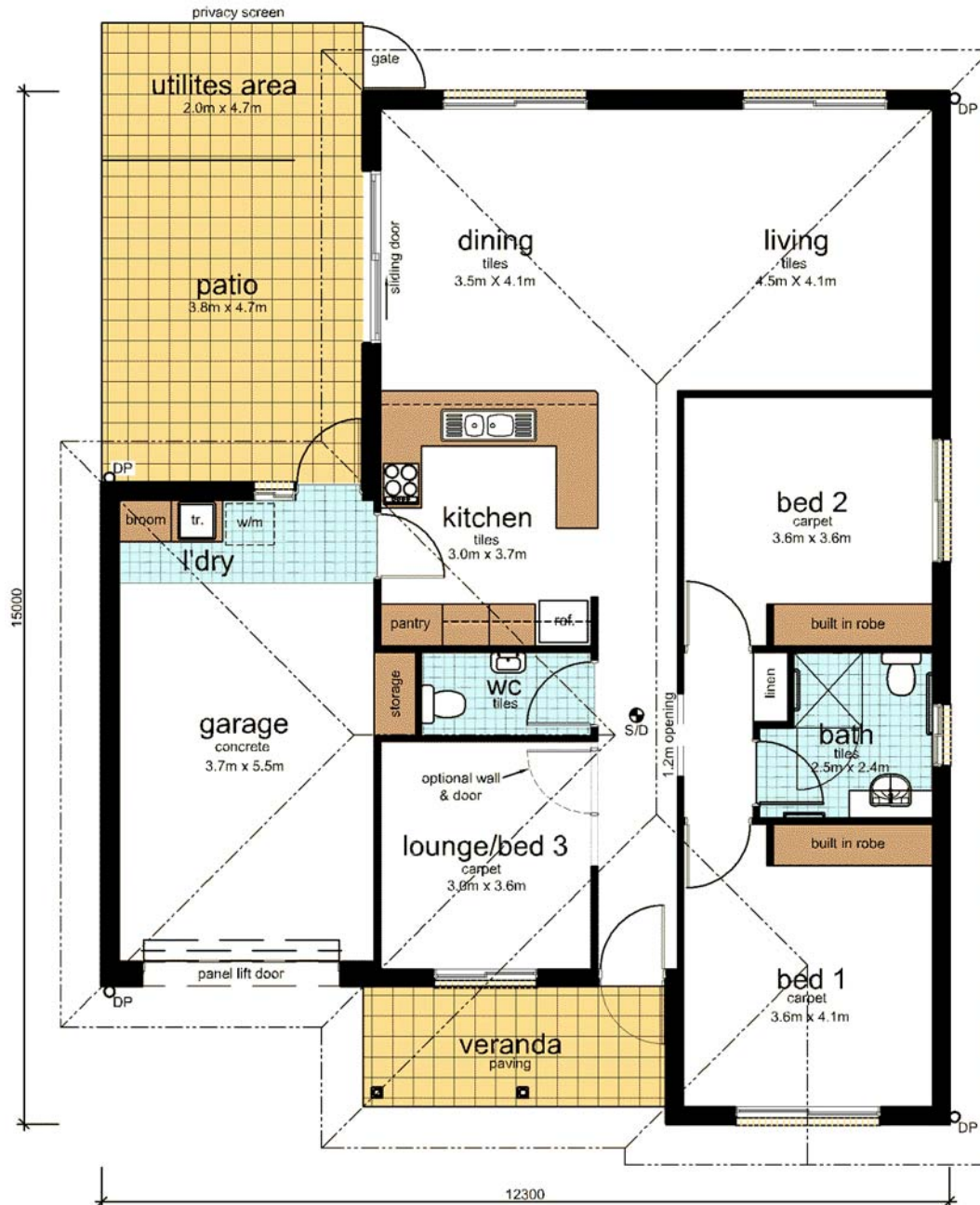


The Masterton Deluxe (XD)

2 bedrooms + lounge, 1 bathroom, 2 WC , single garage



Features & Inclusions

- Built in robes
- Ducted reverse cycle air-conditioning
- Emergency monitoring system
- Remote controlled panel lift garage door
- Private outdoor courtyard
- Fencing, paving & landscaping
- Solar/electric hot water service
- Ceramic cooktop
- Light fittings

Optional Extras

- Courtyard Verandah
- Ceiling fans
- Roller Shutters

Additional

- Window furnishings